

## School Age Program

Children are provided on-site care in a safe, supervised environment. ACPC offers care during conference weeks, school breaks and on snow days. On-site care allows the students to participate in activities before and after school.

The school-age staff is an energetic mix of elementary education college students and full-time personnel. ACPC provides central administration to assist in training, supervision, program planning and food preparation.

- Arts and crafts
- Breakfast and snacks
- Computer
- Group games
- Hanging out with friends
- Homework help
- Outdoor play
- Service projects

## Program Hours

ACPC provides school age care at the following times:

Monday – Friday .....7:00 a.m. to 8:25 a.m.  
.....3:20 p.m. to 6:00 p.m.  
Wednesdays .....2:05 p.m. to 6:00 p.m.

**“ACPC has literally been a second home for us, and our children have benefited so much from the tender and fun care the staff has offered.”**

**Suzanne Zilber**



## School Age Locations

Care for school age children is provided in the following Ames locations:

**Edwards School**  
3622 Woodland Street

**Meeker School**  
300 20th Street

**Mitchell School**  
3521 Jewel Drive

**Sawyer School**  
4316 Ontario Street

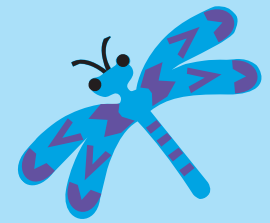
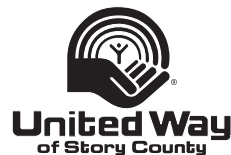
**Fellows School**  
1400 McKinley Drive

**Northminster Presbyterian Church**  
1416 20th Street  
*Care for Fellows School children*

## Summer Day Camp

Full day care for school age children is provided by ACPC during the summer months. Parents may choose from full- or part-time options. Summer activities include:

- Arts and crafts
- Day trips
- Individual projects
- Library activities
- Parks and Recreation classes
- Picnic days at local parks
- Swimming
- And much more!



ACPC • 611 Clark Avenue • Ames, Iowa 50010  
(515) 233-2901 • [www.acpc-childcare.org](http://www.acpc-childcare.org)

## The Center

Ames Community Preschool Center (ACPC) was established in 1968 as the first non-profit childcare center in the Ames community. ACPC is governed by a volunteer Board of Directors. The sliding fee scale is supported by funds from ASSET (GSB at Iowa State University, United Way, City of Ames and Story County). All ACPC sites are licensed by the Department of Human Services.



## The Toddlers

Full day care for children 18 months to 2½ years is provided at the ACPC Toddler Center. The Toddlers spend their days exploring, verbalizing and practicing new skills in a home-like environment.

## The Children

Full day care is available for children from 2½ years up to Kindergarten. Children participate in planned activities geared toward their developmental levels.

Examples include:

- Community field trips
- Educational activities
- Free choice times
- Group time
- Library story time
- Nutritious meals
- Outdoor play and park visits
- Readiness skills



## The Staff

Each classroom is staffed with full-time head and assistant teachers. Our teachers prepare developmentally appropriate lesson plans based on the needs, interests and goals for the children in their classes.

Parents are informed of their child's activities and progress through daily communication, monthly calendars, newsletters and periodic progress reports.



## ACPC Advantages

- Cy-Ride access
- Downtown location
- Flexible schedules
- ISU student discounts
- Quality reputation
- Sliding fee scale

## Program Hours

**12 MONTHS, MONDAY-FRIDAY**

### Toddler Center

521 6th Street.....7:30 a.m. to 5:30 p.m.

### Main Center

611 Clark Avenue .....7:00 a.m. to 6:00 p.m.

## Children Learn...

### Through Dramatic Play

- Cooperation with others
- Creativity
- Communication skills
- Experimenting with different roles

### Through Art Activities

- Creative expression
- Eye-hand coordination
- Positive self concept
- Concepts of color, size, texture

### Through Story & Music Time

- Language development
- Auditory discrimination
- Listening skills
- Appreciation of music and literature

### Through Table Games

- Small muscle coordination
- Classification skills
- Concepts of colors, shapes and numbers
- Reading and math readiness

## More information

For more information about ACPC, or to arrange a tour of the facility, call us at (515) 233-2901. You may also visit us online at [www.acpc-childcare.org](http://www.acpc-childcare.org).

